



Awards Catalog & Logo Wear 2019

How does the catalog work? It is open to all members. Each item has a “Point Value”.

One (1) point is equivalent to one dollar (\$1.00) Example: If the item is 20 Points.. It's \$20. to purchase. Award winners will be given points to shop with. You may shop for just what your awarded points are OR upgrade and pay the difference. Additional items may also be purchased... there is no limit.

Points: All award winners will receive a certificate with their point total. For any un-used points, there will be no refunds or carry overs. Awarded points are non-transferable.

Logo & Embroidery: Each item that can be embroidered will have a crest size MNSPHC logo on it and is included in the price. **NEW:** To add your name, horse's name, class, Grand Champion, Reserve Champion, etc.— **there is an extra charge per line. Limit of 20 characters per line. Standard size lettering is \$6.00 per line. Lettering on jacket backs, sleeves or any other larger font is \$8.00 per line.** If you would like the large size logo on a jacket back or sheet instead of the front crest, there is an additional fee of \$25.00. Choose your embroidery color... popular colors on black: Hot pink, Lime Green, Turquoise, White, Red & Silver.

How do I order: Order forms may be printed from the last page of this catalog. Please completely fill out the order form. Make sure to include your address, phone number and email address in case there are any questions with your order. Check or Money Order must accompany order form for any amount over your awarded points made payable to MNSPHC.

When will I get my order: Orders will be at the Member Appreciation and Awards Banquet.

NEW: If you are unable to attend, please make arrangements for your order to be picked up for you at the banquet. If this is not an option, we can ship your order to you after the banquet. There will be a \$20.00 handling fee plus shipping costs.

Order Deadline: All orders are due in by October 23, 2019

For any questions:

Contact Deanna Johnson 612-390-9805 call or text....or email tripledfarms@Q.com



Port Authority Core Soft Shell Jacket

Color Black.

J317 Adult/Mens— XS - 6XL 45 Points

**L317 Ladies— gently contoured
XS - 4XL 45 Points**

**Y317 Youth— 40 Points
XS(4), S(6-8), M(10-12), L(14-16),
XL(18-20)**

TLJ317 Tall Sizes— LT - 3XLT 50 Points

**All items with embroidery include
MNSPHC crest size Logo.**

Lettering: Limit 20 characters per line.

**Standard lettering: (font for jacket
fronts, Bags: halter, garment, boot,
chap, chairs, etc) \$6.00 per line.**

**Larger lettering: (font for jacket
backs, sleeves, sheets, stall Bags,
etc.) \$8.00 per line.**

**Large size Logo for jacket backs,
sheets, etc— \$25.00**

**Specify your embroidery color...
popular colors on black: Hot Pink,
Lime Green, Turquoise, White,
Red, Silver.**



Ladies Two-tone Jacket

Nice Jacket! Port Authority Soft
Shell. Colors: Black/graphite,
Navy/graphite
Sizes XS - 4XL

L794— 55 Points



Mens Two-tone Jacket

Port Authority Soft Shell. Colors:
Black/graphite, Navy/graphite,
Sizes XS - 4XL

J794— 55 Points



Three Season Jacket White Bear Clothing Co.

Nice jacket! Anti-pill Heavyweight fleece lining.
Sizes S , M, L, XL, 2X, 3X, 4X also available in Talls.
Colors Red/Navy, Forest/Navy, Black/Charcoal,
Royal/Navy, Dark Maroon/Black, Charcoal/Black
and Black/Black

WB4040 - 55 Points





←
**Ladies Core
Soft Shell Vest**

Port Authority
Colors: Black, Battleship
Grey, Navy, Marshmellow
Sizes: XS—4XL

L325—40 Points

→
**Mens Core
Soft Shell Vest**

Port Authority
Colors: Black,
Battleship Grey, Navy
Sizes: XS—4XL

J325— 40 Points



←
**Womans Ariat
Ideal Down Vest**



←
**Mens Ariat
Crius Vest**
Authentic
Western Vest



NOTE: Sizes & colors available as follows:

(Atomic Blue— M, L, XL, XXL) • (Coral—XS, S, M, L, XL)

• (Black—S, M, L, XXL)

10015856—85 Points

Quilted outer shell, poly insulation.

Black—S, M, L, XL, 2XL

10013100—70 Points

**Ariat Woman's Black Quilted
Terrace Jacket**

Diamond quilted shell, saddle vents,
adjustable waist tab, novelty print lining,
cool climate insulation.

Sizes: S—XXL

173099— 95 Points





**Enzyme –washed
comfort fleece!**



**Oatmeal
Red**



**Heather
Royal**



**Oatmeal
Charcoal**



**Heather
Red**



**Heather
Charcoal**

Ultra Soft Vintage Hooded Heathered Fleece with raw-edge seams— Sizes run big: S—3XL No personalized embroidery. Will have sublimated MNSPHC patch. If enough are ordered, will be vintage MNSPHC screen print across the chest area.
JA885—40 Points



Hooded Sweatshirt

Gildan Heavyweight blend 8 oz. 50/50 Cotton/Poly. Double-lined hood with drawstring. Colors shown—Kiwi, Heliconia & Antique Sapphire. Also available in same colors as Crew Shown below. Sizes - S - 5XL

18500— 25 Points



Gildan Heavy Blend Sweatshirt Crew

50/50 cotton/poly blend, no pill 8 oz. Colors show— Antique Cherry Red, Antique Sapphire, Black, Carolina Blue, Dark Heather, Dark Chocolate, Sand, Purple. Also available in Kiwi & Heliconia as shown above. Sizes - S - 5XL

18000— 20 Points

Lace Up Pullover Hooded Sweatshirt

65/35 cotton/poly blend, 9 oz. Colors shown—Black, Deep Red, Graphite Heather. Also available in Navy, Royal & Athletic Heather. **YOUR CHOICE OF LACE COLOR**— as shown is white with gray stitch OR choose from colors below. Neon Pink & white stitch, Neon Green & white stitch, Black & white stitch, Pink Raspberry & white stitch, Purple & white stitch, Red & white stitch. Sizes - XS - 4XL

ST271— 35 Points



Ladies Cap Style LC830

Popular style with contrast sandwich bill. Exceptionally soft feel & appearance. Ladies version features a smaller circumference & shorter bill. Colors as shown—Deep Mango/white, Black/khaki, Khaki/charcoal blue, Blue Iris/stone

LC830— 15 Points



Ladies Cap Style LPWU

Ladies version garment washed for a lived in look. Slightly brushed for softness & comfort. Shorter bill. Colors—Bright Pink (shown), Black, Stone,

Faded Blue. **LPWU— 15 Points**

Mens Cap Style C911

Adjustable Mesh back, soft ultra breathable cap. Closure: hook & loop. Colors—Black, Red, Navy, royal, Gold, Sage Green, White, Grey. **C911— 15 Points**



Mens Cap Style DT607

Cotton twill with soft poly mesh. Closure hook & loop. Colors—Chocolate/white (as shown), Army green/white, Black/white, Navy/white, Red/white

DT607— 15 Points



Handbag BG405

Large single shoulder strap over the shoulder or across the body. 11 oz. 100% washed cotton canvas. 11.5H x 13.5W x 4.75D. Interior zipped pocket. Contrast lining. Black/Charcoal, Pink/Charcoal, Turquoise/Navy

BG405— 20 Points

TUFF MATE—The Cutting Horse Nice, soft grain goatskin riding/driving glove. May have initials or name lasered on gloves. (Included) Ladies size: 7-9 **25 Points**

Deerskin Glove— soft, unlined with MNSPHC logo. May have initials or name lasered. Mens size: XS, S, M, L, XL Note: Size small is equivalent to Womens size 9. **25 Points**





Cowhide pattern
may vary per item.

Cowhide Small Purse/Makeup Case

Stamped leather - MNSPHC Logo and your choice of lettering included. 12 x 6 x 4

#4CL1H 45 Points ↑

#4CL1H w/shoulder strap 60 Points



Croc Small Purse/Makeup Bag ↑

12 x 6 x 4 Available in **Croc Styles:** Black, Brown, Distressed Black, Honey Golden Brown, Pink, Mint Chocolate Chip, Antique Turquoise. **Print Styles:** Pink Paisley, Turquoise Paisley, Leopard. MNSPHC Logo and your choice of lettering.

#4CL1C 50 Points



Cowhide Shave Case ↑

Stamped Leather - MNSPHC Logo and choice of lettering included.

#4CL1 45 Points



Stylish Compact Tote/Makeup Tote ↑

Small tote. No gusset. 8.5 X 10 Zipper Close. Available in same choices as small croc purse listed above. Stamped Leather - MNSPHC Logo and choice of lettering included.

#4MT 40 Points



Wood Top Soft Finishing Brush

MNSPHC Laser logo and your choice of lettering included.

#493 15 Points



YETI Tundra 35 Cooler

Dimensions—

21 long x 16 wide x 15.5 tall

Up to 20 can capacity with

2:1 ice-to-content ratio.

Empty weight 17 lbs.

Colors—Desert Tan, White,
Sea Foam

250 Points



ENGEL 35 Hard Cooler

The original high-performance cooler. Up to 8 days ice retention, high reviews—compare over Yeti. Exterior Dimensions 25.25 x 14.5 x 15.25

Colors: Camo, Pink, Artic Blue, Haze Grey, Sea Foam, Tan, Coastal White **245 Points**

CHILLOUT Stainless Steel Tumbler

Hot up to 8 hours & Ice-Cold up to 24 hours!

Made from the highest quality food grade stainless steel. BPA Free.

20 oz and 30 oz. Reviews say "Same quality as Yeti!" **NEW COLORS!**

NOTE: Names/Champion may be put on Tumblers. One line lettering with logo included in price. For additional lettering on back side, add \$10.



30 oz Style

Colors: Purple, Pink, Blue Sparkle, Aqua Blue, Black

30 Points



← 20 oz Style

Colors: Aqua Blue, Black, Mermaid Sparkle, Pink, Purple

25 Points



Supreme Chap Bag

Soft, padded case. 420D Nylon outer, quilted and lined. Hanger cut-out at top. 33 x 21 Colors - Black or Navy

15751 50 Points



Supreme Helmet Case

Keeps helmet clean. Soft, roomy case with extra space for gloves & related items, 420 denier outer, quilted & lined.

Colors - Red, Black, Navy, Green.

#10719 25 Points



Dura-Tech Quilted Garment Bag

600D Poly—40" long x 24" wide. Colors: Burgundy with black binding & gray piping, Gray with black binding & gray piping.

40867 60 Points



Tall Boot Bag by Brookside Holds English or Western boots. Waterproof & breathable. Hard bottom with rubber guards. Colors: Black/Tan—Hunter/Tan—Navy/Tan—Purple/Silver **65 Points**



Dura-Tech Deluxe Folding Garment Case

Heavy duty 600D polyester. Full length front zipper, Tiered nylon hoops. Fold over design with padded carry handle. Color: Black

#34995 45 Points



Small Duffle/Gym Bag

600 Denier polyester, front pocket and end zippered pocket. Adjustable, detachable padded shoulder strap. 10.75"h x 20.75"w x 9.5"d Specify color. Navy, Red, Royal, Black, Pink, Maroon, Carolina Blue, Hunter

#BG970 20 Points





Supreme Quilted Halter & Bridle Bag

420 D water repellent, quilted Nylon

Colors: Navy, Black, Burgundy, Green, Red & Purple.

#18048 40 Points



Single Western Hat Can Carrier

Colors: Black, Hot Pink, Lime, Purple, Teal, Royal Blue

#17991 40 Points

All in one Grooming Box, Step Stool or Seat.

Removable tray & fold down carry handle

Pink w/pink tray, Gray w/black tray →

16" W x 12" H

#37165 55 Points



3 Ring Binder

Premium leather in exotic print with tooled overlay.

12" x 10" x 1 3/4"

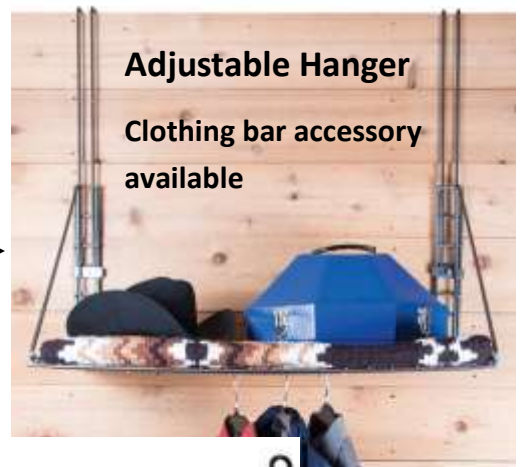
35848 160 Points

Easy Up® Fold Up Hanging Shelf with adjustable hanger

#25363 80 Points →

Matching Clothing Bar Accessory

15 Points ↓



Adjustable Hanger

Clothing bar accessory available





Style Stable Products— Colors available in **quilted material**:
Red, Royal, Navy, Black, Green, Burgundy Choice of **trim /handle**
color: Black, Royal, Navy, Red, Green, Burgundy, Purple.

Enlarged embroidery for name— \$8.00 per line.

3rd Color Trim piping— Add \$10. Colors: Kelly Green,
Evergreen, Yellow, Gold, Pink, Orange, Purple, Tan, Old
Gold, White, Burgundy. ↓



Style Stable Western Saddle Carrier 90 Points

Style Stable English Saddle Carrier 65 Points

Style Stable Show Pad Bag

Specifically made to hold 4-6 oversized pads.

Mesh edge for ventilation

65 Points



Style Stable Custom Show Tote

Perfect get ready bag! Easily holds brushes, sprays, towels & much more! Inner & outer pocket. Colors: stated above for quilted material & trim.

35 Points

Stall Bags by Style Stable

Large Stall front bag designed to hold your horse's clothing plus (2) inner pockets for storage. Great for at home or competition. Adjustable straps for hanging & carrying to and from the trailer.

Bag measures 28" Long x 25" wide x 7" deep. **65 Points**

Colors:

royal blue	hot pink
navy blue	red
orange	grey
yellow	turquoise
purple	hunter green
black	brown / chocolate
lime	white

Add \$8.00 per line for large
Embroidery lettering





Western Saddle Cover by Brookside

← 420 Denier, water repellent, elastic around bottom. Colors: Black, Hunter, Navy, Plum
30 Points



English Dust Cover by Cashel

Color: Black 30 Points →

Adjusta-Fit Dura-Nylon V-Free Sheet

420 Denier, closed front →

Colors: Red, Purple, Royal, Black, Burgundy, Green

Sizes: 64—86

#10530 75 Points



Adjusta-Fit Dura-Nylon V-Free Sheet

CutBack Wither

← 420 Denier, closed front Colors: Red, Purple, Royal, Black, Burgundy, Green Sizes: 64—84

#10529 75 Points



← **Therapeutic Mesh Sheet** Colors: Black, Navy, Hunter, Burgundy Size: 78—84
270 Points

Therapeutic Horse Cap →

Color: Black Size: Full or Cob 55 Points



Therapeutic All Purpose Saddle Pad

↓ Colors: Black, Burgundy, White 90 Points



Therapeutic Western Saddle

Liner for use under your regular saddle pad Color: Black 60 Points



PERRI'S Premium LEATHER HALTERS



Made in America. Top quality leather, masterly assembled by Amish craftsmen and leatherworkers.

#190 Perri's Soft Padded Leather Halter

Soft, luxurious leather with colorful, genuine lambskin padding makes this piece exquisite. Double buckle padded crown and adjustable chin. Rolled throat latch.

Colors: **Black Leather/Stainless Steel Hardware**—padding choices Black, Red, Pink, White, Turquoise, Sky Blue & Blue

Havana Leather with Solid Brass Hardware—padding choices Brown, Purple, Pink, Turquoise, Blue, Hunter

Sizes: Horse, Cob, Oversize **#190 125 Points**



Leather Halters may be personalized with an engraved plate for an additional 20 points



#100HH Perris 1" Horse Havana Show Halter

← Double buckle crown and adjustable chin.

Color: Black, Chestnut, Havana **#100C for Black/with chrome**

Sizes: Yearling, Cob, Horse, Oversize **110 Points**

Black Nylon Halter with Leather Personalized noseband with choice of gem color on side bars included. Average horse size only

#CT105 LTH 45 Points

Gem Choices





Ultra-Flex Full Separating Zipper Slicker Hood

← Durable 8 oz. 4-way stretch Lycra. Oversized eyes, rub free design. Polar fleece lined noseband. No center seams on face or mane.

Sizes: **Sm** (64-68) • **Med** (68-74) • **L** (76-80) • **X-L**(80-86)

Colors: Black, Burgundy, Gray, Navy, Purple, Red, Royal

13440 70 points

Note: Slicker Hoods will not be personalized.
To screen print, quantity amounts are required.



Dura-Tech Full Separating Zipper Slicker Hood

→ Economy lightweight 6.5 oz. 4-way stretch Lycra. Oversized eyes, rub free design. Polar fleece lined noseband. No center seams on face.

Sizes: **Sm** (64-68) • **Med** (68-74) • **L** (76-80) • **X-L**(80-86)

Colors: Black, Brown, Hot Pink, Turquoise

NOTE: Size Large is only available in Turquoise

40227 50 points

Rosie's Painted Ponies



Rosie's custom hand painted pieces. Bust measures 9" plus base...total approximately 10.5 inches tall. Ceramic clay....so yes, handle them with care! Price includes hand painting to match your horse. Please submit quality detailed photos for all 3 sides of the bust... to tripledfarms@Q.com or through Messenger to Deanna Johnson. Bust (head piece as shown) only **45 Points**



Custom made Show Pads— 11 Exclusive patterns and 72 Color options.
Size 34 x 42, 8.5+ lbs. tight weave & stamped wear leathers. You may choose from in-stock styles or the designers will create one for you!

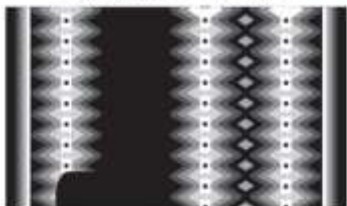
BACKROAD
TRADING COMPANY



**EXCLUSIVE
PATTERNS**

210 Points To order, put Custom Show pad on your order form. You will be contacted after the order deadline date to go over options!

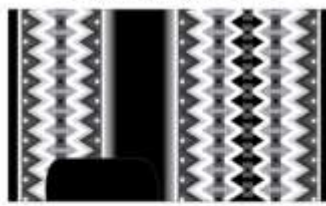
<< WESTWOOD PATTERN >>



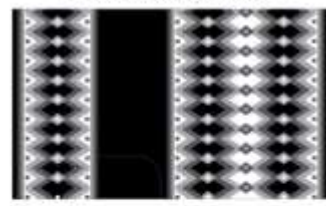
<< OLD WESTWOOD PATTERN >>



<< WAVERLY PATTERN >>



<< LAKEWOOD PATTERN >>



<< WINSTON PATTERN >>



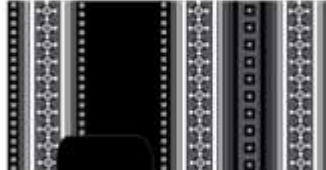
<< OLD WINSTON PATTERN >>



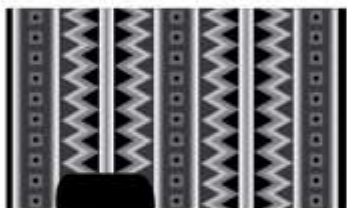
<< DREXEL PATTERN >>



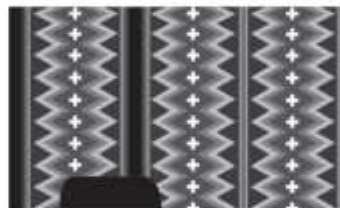
<< DEARBORN PATTERN >>



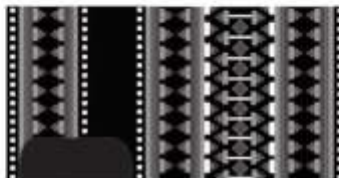
<< WALKER PATTERN >>



<< WYATT PATTERN >>



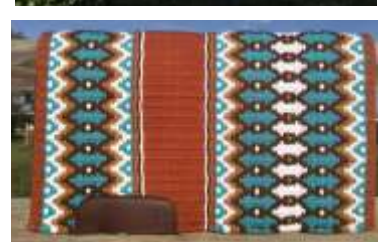
<< LANCASTER PATTERN >>



CHOOSE YOUR COLORS! 72 OPTIONS!

AUBERGINE	CREAM	PERIWINKLE	LEMON ICE
BURGUNDY	WHITE	MALIBU BLUE	HONEY
RED EARTH	LAUREL GREEN	ROYAL BLUE	PEACH ICE
RUST	KEY LIME ICE	NIAGARA	TAUPE
COPPER	PISTACHIO	AQUA	RAW UMBER
TABASCO	SAGE	CRYSTAL ICE	SAND
SHOW RED	LIME	LILAC	SHEEPSKIN
RASPBERRY	LIME BLAST	ORCHID	BUCKSKIN
GARNET ROSE	TEAL	SLATE BLUE	FAWN
FUCHSIA	KELLY GREEN	SHOW PURPLE	INDIAN TAN
FANDANGO	DARK OLIVE	GRAPE JUICE	CARAMEL
RAPTURE ROSE	FOREST GREEN	SOFT PURPLE	CHOCOLATE
CORAL	HUNTER	CADET	CHESTNUT
TANGERINE	NAVY	ROYAL LILAC	COFFEE
ORANGE	INDIGO	PINK CARNATION	BLACK
GOLD	OCEAN BLUE	SACHET PINK	CHARCOAL
YELLOW	SHOW TURQ	SWEET PINK	GREY
BUTTERCUP	SOFT TURQ	LAVENDER ICE	STARLIGHT

* **METALLIC GOLD OR METALLIC SILVER**
CAN BE ADDED TO ANY YARN COLOR





8 x 10 Photo Frame— 35 Points

Measures approximately 12 x 14 x 3/4. Add \$3.50 for engraved Silver or Gold plate.



8 x 10 Photo Frame— 40 Points

Measures approximately 16 x 13 7/8 x 2.5 Add \$3.50 for engraved Silver or Gold plate.

Note: Medal Stars shown on pieces are on backorder... for an undetermined amount of time.... piece may come without stars.



8 x 10 Photo Frame Holds 1—3 Buckles

45 Points Add \$3.50 for Engraving on Gold or Silver plate—replaces top center star.



Medium Hinge Topped Box— 55 Points

Includes engraving on white cowhide diamond.
Box Measures 14 x 9.25 x 5

NOTE— Please specify your choice for the frames or box— Cowhide Color, Stain Color and Embellishments...



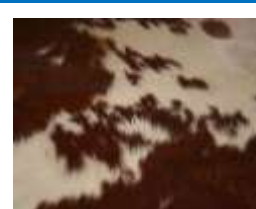
Tri Colored



Brown & White



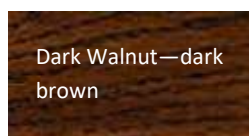
Brindle



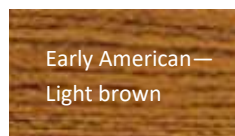
Red & White



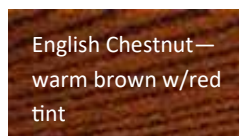
Black & White



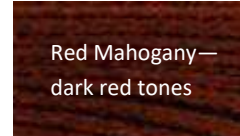
Dark Walnut—dark brown



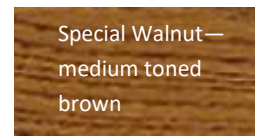
Early American—Light brown



English Chestnut—warm brown w/red tint



Red Mahogany—dark red tones



Special Walnut—medium toned brown



Old Copper



E Tacks textured



Glossy Black



French Natural



Z Tacks dark brown textured



Matte Black



Pewter



Cowboy Bronze

Available in 3/4 (the backside is flat) or Full Body (full statue front & back). Also in Bronze, Generic Painted (their choice of paint) or Custom Painted to match your horse. All include brass name plate.

Listed here are just a few of the styles to choose from... there are too many to list. To see more, visit the Cowboy Bronze website www.comboybronze.com and view the Product Catalog. To order a different style than listed here, contact Deanna Johnson 612-390-9805 call/text or tripledfarms@Q.com for pricing. For custom painting to match your horse, we will need to get a quote.

Full body



FBNHH

Full Body New Halter Horse - 8.5" tall
Bronze 160 Points
Generic Painted - 200 Points

Full body

PFBMSENG



Full Body Trotting English Horse - 8" tall
Bronze 230 Points
Generic Painted - 260 Points

Full body

#PFBMSSR



Full Body Trot Sr. West Pleasure - 8"
Bronze 230 Points
Generic Painted 260 Points

3/4 Flat Back



#PCBHH

Generic Painted Halter Horse - 8" tall
Generic Painted 100 Points (as shown)
Bronze - 85 Points

3/4 Flat Back

#CBSENG



English Horse - 8" tall
Bronze - 90 Points

3/4 Flat Back

#PCBSR



Sr. Western Pleasure Horse - 8" tall
Bronze - 90 Points
Generic Painted - 105 Points

2020 Line A little smaller and no tack. Each piece is Full body Bronze on 3/4" base.



#CLPR20—Performance Horse
105 Points



#CLH21—Halter Horse
105 Points



#CLPL20—Pleasure
105 Points



#CLE20—English
105 Points

CB15



Flat back Halter Head 6" tall
Bronze - 45 Points

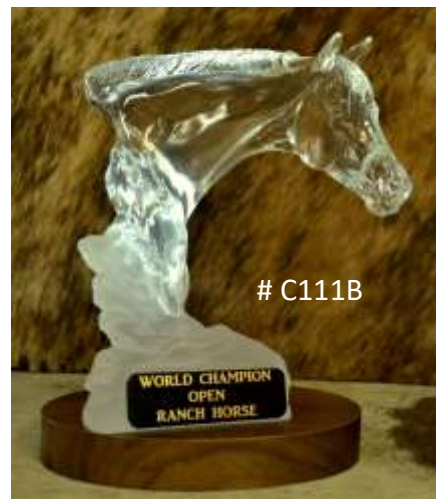


FB15



Full Bust Head 6" Tall
Bronze - 90 Points

C111B



Cowboy Crystals 6 1/2" Tall
80 Points



Custom Animal/Pet Portraits painted by Destiny

Finished pieces in acrylic on stretched gallery canvas. Can be hung as they are or can be framed. Choice of a plain background or background of your sending. The "larger" the print size, the more detail like whiskers etc. 12 x 12 size tend to make faces look bigger.

- ◆ 12 x12 solid background **65 Points**
- ◆ 11 x 14 solid background **75 Points**
- ◆ 16 x 20 solid background **80 Points**
- ◆ 12 x 12 with background **85 Points**
- ◆ 11 x 14 with background **105 Points**
- ◆ 16 x 20 with background **115 Points**

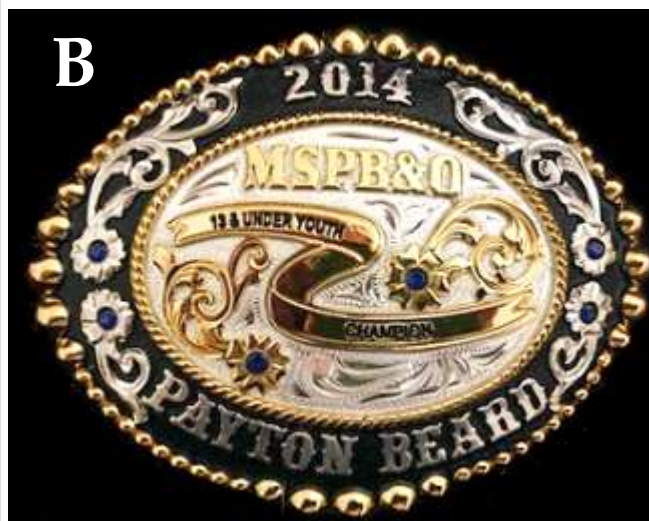
To order: Submit photo to be painted from, background choice, animal's name and she likes to know a little about them to help her capture their personality!

Custom made Belt Buckles

3 Styles - Choice A, B or C

135 Points each

Choose Stone Color: Blue, Light Blue, Dark Blue, Red, AB, Clear, Light Green, Purple, Pink, Topaz, Black, Fuchsia, Teal or Light Turquoise.



#215



#205



Kathy's Show Halters

Many styles to choose from... above are two styles showing a Regular Cut and a Congress Cut... but not all styles are available in each size.

Visit www.Kathysshowequipment.com

Browse Kathy's Store—Halters—Santana Halters to pick the style of your choice and size needed.

All are Standard Dark Leather. Each halter will have a description of the design.

- ◆ Choose your style
- ◆ Choose Regular Cut or Congress Cut
- ◆ Size
- ◆ Buckle choice
- ◆ Stone color if applicable

Information is available on correct sizing and how to pick which cut (Regular or Congress) is best for you .

Kathy's Show Equipment is one of our sponsors offering this great deal! Halters are regularly priced at \$430. plus shipping!

Halters 340 Points each



Kathy's Custom Spur Straps

#Y1

155 Points

Spur strap price is for the style shown...if you prefer a different style from Kathy's website... we will need to get a quote.

Kathy's Custom Spurs



A

A— 395 Points



B

B— 395 Points



C

C— 395 Points



D

D— 395 Points



E

D— 125 Points



F

F— 295 Points



G

G— 160 Points



Dura - Tech Folding Short Directors Chair

Black powder coated finish

Colors - Black, Navy, Red

#38051 85 Points



Dura - Tech Folding Tall Directors Chair

Black Powder coated finish over durable 1" Aluminum frame.

Colors - Black, Navy

#38052 105 Points



North Star Bucks

To be used in 2020 only.

May be used towards Stalls, Entry Fees or Directory Ads.

Available in these amounts **ONLY**

- ◆ 5 Bucks
- ◆ 10 Bucks
- ◆ 20 Bucks



Magellan Outdoors Oversize Collapsible Recliner

Heavy duty, 19mm steel frame

Breathable mesh back

Fully padded with upright and reclining positions

Extra large, insulated cup holders

Maximum weight capacity 300 lbs.

Carry Bag

Colors: 2 tone— Blue or light Beige

Recliner 60 Points

Minnesota North Star Paint Horse Club 2019 Catalog Order Form

Please print

NAME_____

ADDRESS_____CITY_____

STATE_____ZIP_____PHONE_____

EMAIL ADDRESS_____

Item #	Description	Color	Size	Amount

*** All orders Due IN by October 23, 2019 ***

Send completed form with any additional \$\$\$ due (make checks payable to MNSPHC) mail to:

Deanna Johnson
2427 230th Ave.
Brook Park, MN 55007

Sub Total
Extra Lettering Fees
Total
Less Awarded Points
Amount Enclosed

For Extra Embroidery Lines or Personalization.... Please print exactly how you want it.
